





Universal Reservation allows you to manage shared assets within your organization.

Booking company resources has never been easier.

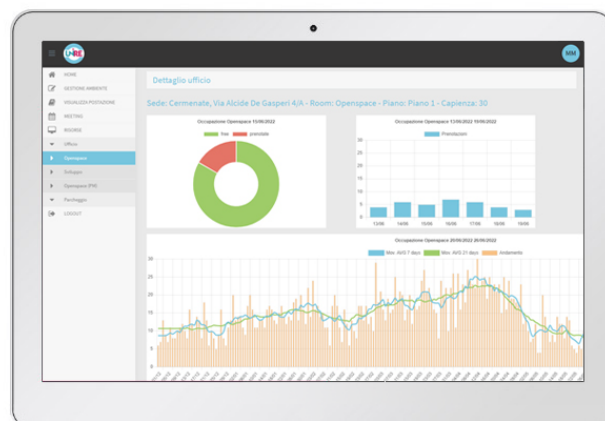
UniRe is the ideal tool for managing and monitoring the use of workstations, meeting rooms, cars, parking spaces, wardrobes, instruments and all other shared company resources. But not only that. UniRe also allows you to manage corporate events and meetings.

A tool for everyone

UniRe is a customizable portal, which is why it is the ideal support for every type of company (SMEs, multinationals even with foreign branches, and VAT numbers), for every type of business (coworking spaces, catering, hospitality, retail, fashion, sports centers, wellness centers, car fleets, universities, libraries, space rental and much more), and for every type of stakeholder (employees, suppliers and end customers).

- Companies that operate on shifts
- Realities with limited workstations that want to implement their remote working
- Companies with organizational needs for the management of shared spaces.
- Companies that want to grow by prudently modulating investments

**For all of, UniRe
Universal Reservation
is the right tool**



The elements involved in UniRe

There are three agents involved in UniRe

- ADMINISTRATOR
- COLLABORATOR
- TOTEM

Administrator

The administrator of the organization can create a map of the company spaces, and then insert individual resources into it and manage the environments.

The administrator can see the reporting of booked resources: analyze trends and data by user, by room and by location. The administrator can also choose to define work groups (like sales, technical assistance, etc.) to which to deny or assign authorizations regarding the possibility of booking certain resources.



Collaborator

Thanks to UniRe, the collaborator, who can be an employee, the customer or an external party, can book a workstation on the map designed by the administrator or a company resource (within the limits of the authorizations granted to the group to which the collaborator belongs).

With the UniRe calendar, the collaborator can view the availability (free, occupied or partially occupied) of the meeting rooms in the period of interest.

Totem

The totem is a tablet with Android system that can be positioned near the bookable resources and meeting rooms; it allows you to view whether the room is free or occupied and the booking details. Via the totem, it is also possible to book the resource immediately.

Application components

UniRe is made up of three elements:

Information tablets/displays



that show the status of the associated resource (free, booked, busy) and allow you to perform contextual actions, such as booking the resource.

The user console



to view the occupancy status of meeting rooms and to book resources, but also to view upcoming events

The administrator console



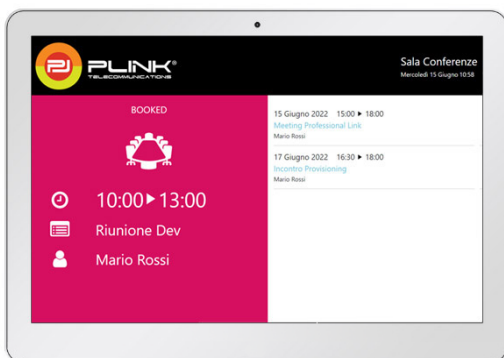
to manage the system, give or deny authorizations, view data and analyze reports by user, by room, location and analyze trends (the most booked resource, the user with the most active reservations, etc.).

Status display

Via dashboard or via totem, it is possible to view the status of resources.

Free room

By pressing the «Book now» button it will be possible to schedule a new meeting. On the right side are shown the meetings already scheduled.

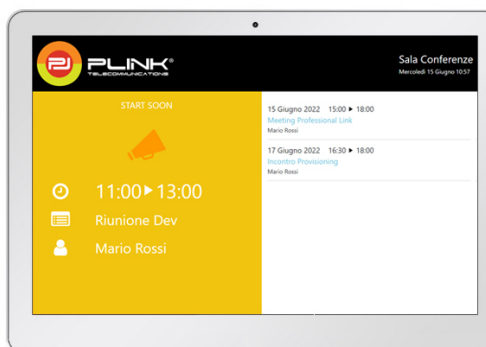


Occupied room

The message «Busy» will be displayed in the left section along with the date and time of the event. Future bookings are displayed in the right section.

Upcoming event

The left section will indicate that an event is about to start and its details will be highlighted.



Usage scenarios

UniRe adapts to the most varied realities, it is designed to meet the needs of any business that wants to organize its shareable resources.

Some examples are:

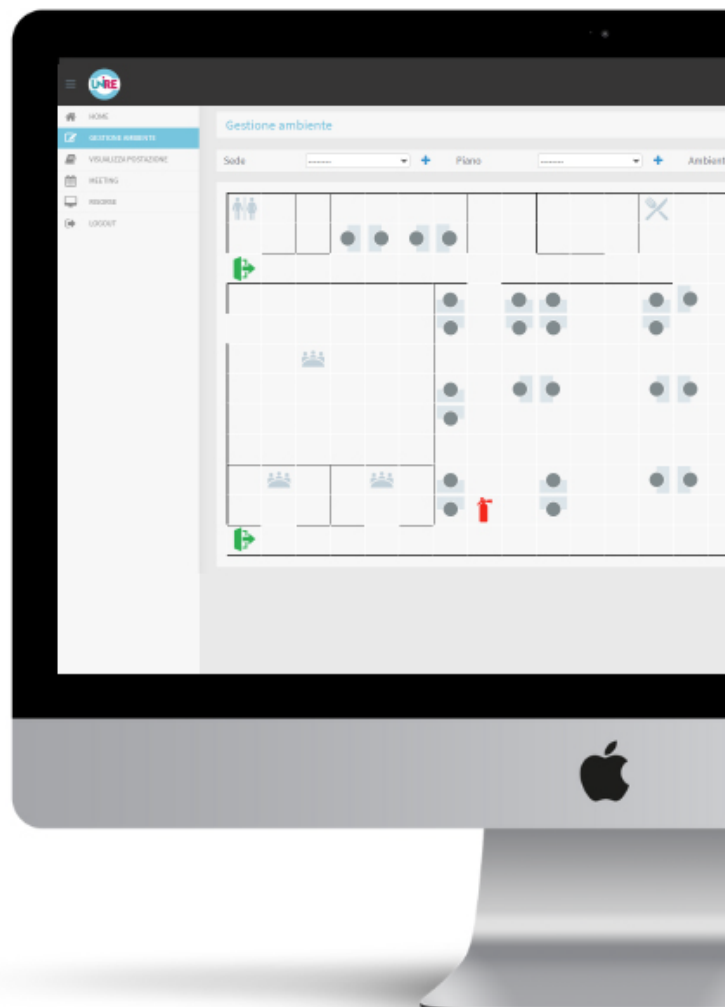
- **Companies:** workstations, meeting rooms, company car fleets, work tools
- **Restaurants and hotels:** tables, rooms
- **Sports centres:** sports fields, changing rooms, lockers
- **Wellness centres:** cabins, sunbeds, changing rooms, lockers
- **Universities, libraries, conference centers:** study stations, rooms, workstations, books and catalogues
- **Co-working spaces:** rooms, workstations, devices

Customization

UniRe is built on the needs of individual companies, therefore it is completely customizable.

For example:

- The colors and graphic style can be customize depending on the visual identity of your company
- UniRe can support the resources of multiple company offices, both in Italy and abroad
- Each location can have multiple floors, and each floor can have infinite environments.
- The graphic representation of the environments, workstations and shared resources is totally customizable, to best reflect the reality of your business.
- You can decide the days and times of availability of resources, without limits
- UniRe can be run on the main browsers, on smartphones, tablets and computers.



Privacy and security

At Professional Link we respect your privacy by complying with the GDPR: your data remains in Italy.

Login to UniRe is SSO (Single Sign On) with the Microsoft active directory service. This allows you to use your Microsoft account to log in to the system, thus benefiting from its cyber security. This also makes it easier for the administrator to add, remove or modify users.

Integrations

UniRe is designed to integrate with Outlook and Office 365 calendar thanks to the automatic synchronization of events; alternatively, an internal calendar is available. Thanks to synchronization, all 365 corporate users will be automatically imported and have access to UniRe. If the company does not use Microsoft 365 it is possible to access the system with the credentials provided directly by the UniRe platform.

UniRe can be integrated with En.Tra, the PLINK web app for recording attendance in your company (for events, meetings etc). Thanks to this integration, company's registration procedure for guests entrance and check out becomes way simpler.





It is possible to create any other integration on request, to best meet the needs of your company.





Connections beyond Connectivity

Professional Link S.r.l.
Via Alcide De Gasperi, 4/A 22072 Cermenate (CO)
Tel. +39 031 778912
comunicazioni@plink.it
www.plink.it

 comunicazioni.plink.it/blog
 PLINK: Professional Link
 Professional Link
 plink_professional_link